

## Club Engagement Evenings

Thank you all for your attendance over the last few weeks at our 4 events. Over 40 clubs and over 100 members attended one or more of the events and, amongst many topics discussed, heard of our ongoing work around league management, the GMCL Umpires Association, creating umpire lists, building the divisions, managing the ground inspections, registering junior teams across the area, determining club plans for development and improvement and setting out the plans for grants and loans across the amateur and professional clubs.

Thanks to our hosts at Whalley Range, Clifton, Denton West and Heywood. We hope that we will be able to take meetings out to more clubs in the future as and when needed.

One thing we will be doing is a launch event after the end of the 2015 season and more details of this will follow.

## Hot Questions

Here are the most common questions asked at the events

### **Q: When will we know which division we are in?**

A: The procedure for placing clubs will be exactly as described in our Prospectus. We have collated the information on club's achievements and have begun the process of building the team needed to carry out pitch and facility inspections during August. There is an open letter from Ian Pickles which has already been sent to many clubs by e-mail but is repeated later in this newsletter. The whole task should be completed by the end of the season.

### **Q: Why are we taking teams from clubs in other leagues?**

A: The management team stick by the principle leading to the formation of the league which is to ensure we provide cricket at a full range of abilities and age groups for as many players from the region as possible and this includes those who are not given competitive games in their own league structure. We will have the structure and capacity to manage a large number of clubs in a wide range of competitions. It can only improve regionalisation of the divisions and these teams will improve the quality of our competition.

### **Q: How can we help?**

A: We have had a number of offers of help already, keep them coming. We have created a management structure covering areas which as it turns out follows the lines of our original design for the steering group and working groups. Each of those areas will be led by interim directors supported by a team of experts, experienced volunteers, players and eager supporters. Details of the groups and contacts are shown within this newsletter. We are particularly looking for players to work together across the league and divisions to ensure the league meets your requirements.

If you have any questions, comments on this newsletter or offers of support please e-mail us at [GtrMcrCricket@Mail.com](mailto:GtrMcrCricket@Mail.com)

## In This Issue

- Engagement Evenings
- Your Shout
- Hot Questions
- Our Founder Members
- Our Competition Aims
- Interim Roles
- For The Record
- Ground Inspections

## **YOUR SHOUT:**

*"The main reasons that we decided to join is to continue to progress and offer the highest / best level of cricket for our senior / junior players. The opportunity was too good to miss."*

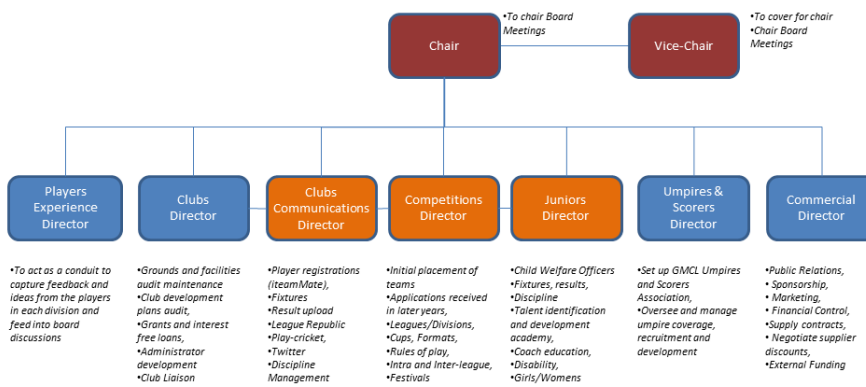
*"We look forward to the process whereby we will be placed in a division appropriate to our performances on and off the field"*

*"We like the idea of promotion and relegation and being in with a chance of winning something at our level"*

*"Local cricket needed a lift, it has become stale and we can look at the amount of discussion which has taken place to prove the game needed refreshing around the area"*

*"Our first team have played in a division against the same teams and players for about 10 years where no one has been promoted or relegated"*

**This is the structure of the league management team and their roles**



## Interim Roles

The Steering Group have asked Martin Kay to take the role of chair up to the AGM. Martin has kindly agreed to do this and will be supported by Ian Pickles as his vice-chair.

Ian and Mike Hall are leading on the huge role of Competitions Director to ensure the accuracy of deliberations on placing teams. Bill Elkin is currently leading on Juniors and has brought together a good team of interested parties and once this is established Bill will hopefully take on the role of Club’s Director with his expertise in Building Partnerships.

Alan Naylor has great experience as an umpire and in umpire administration and has taken this role working with senior officials across the county. Mark Smith has taken the role of Commercial Director working with Brian Lorenzini and others to get the best deals for our clubs. Simon Lowndes will continue to build the IT and media role with a number of volunteers in place to support this activity and the building of fixture schedules along with John Barrow. The Players Director role is not an urgent appointment however a number of players are already supporting the ongoing work so this will be formalised soon.

As was the case with our Steering Group and Working Groups, we are pleased that those in the interim roles and their support teams have a background covering most of the old leagues whose clubs make up the new league.

## Commercial Update & Discussion Highlights

We have received £15,000 seed funding to set up the league and meet our legal requirements.

We are now in the advanced stages of attracting sponsors and partners including ball sponsors and headline sponsors so that we can begin to build the financial base as set out in our prospectus. This will mean no league fees, free handbooks, grants and loans for ground improvement, new trophies, umpires kit and training courses for umpires, scorers and junior coaches in our local areas.

We will not cut across any sponsorship arrangements that clubs already have nor force products on our clubs and any income from sponsors and partners will be used to support clubs and not saved by the league.

## A whole new ball game

The Greater Manchester Cricket League Ltd has been formed to work in a modern way for a modern and new league organisation.

It is a company limited by guarantee, formed after taking legal advice, to protect all our volunteers and ensure that the league remains open and accountable to its members, the clubs.

The traditional league duties remain but the focus of directors activity will be engagement with and support for our clubs, players and officials.

A number of interim directors have already been appointed by the Steering Group to start the ball rolling and to take us to our first AGM in December / January where all directorships are open for election and clubs will vote to appoint directors for 2 year terms.

Our website

[www.gmcl-2016.co.uk](http://www.gmcl-2016.co.uk)

Twitter

[@GtrMcCricket](https://twitter.com/GtrMcCricket)

E-Mail

[GtrMcCricket@Mail.com](mailto:GtrMcCricket@Mail.com)

## REGISTER YOUR JUNIOR TEAMS

If you did not collect a form at an engagement evening to tell us your likely junior teams for 2016 please mail

[GtrMcCricket@mail.com](mailto:GtrMcCricket@mail.com)

And we will send a form out to you. All forms can be returned by e-mail to that address

## Our Founder Members

At this time we have 51 clubs who have confirmed their position as founder members of the Greater Manchester Cricket League.

We welcome all these clubs together with those who will place 3rd XI and junior teams with us.

*Ashton Ladysmith CC  
Astley & Tyldesley CC  
Bamford Fieldhouse CC  
Blackley CC  
Bolton CC  
Bolton Indians CC  
Brooksbottom CC  
Bury CC  
Clifton CC  
Deane & Derby CC  
Denton CC  
Denton St Lawrence CC  
Denton West CC  
Droylsden CC  
Dukinfield CC  
East Lancs Paper Mill CC  
Edenfield CC  
Edgworth CC  
Egerton CC  
Elton CC  
Elton Vale CC  
Failsworth Macedonia CC  
Flixton C&SC  
Flowery Field CC  
Fothergill & Harvey CC  
Glossop CC  
Greenmount CC  
Heywood CC  
Irlam CC  
Littleborough Lakeside CC  
Prestwich CC  
Radcliffe CC  
Rochdale Catholic Club CC  
Roe Green CC  
South West Manchester CC  
Springhead CCC  
Stand CC  
Stretford CC  
Swinton Moorside CC  
Thornham CC  
Tottington St Johns CC  
Unsworth CC  
Walshaw CC  
Westleigh CC  
Whalley Range CC  
Winton CC  
Woodbank CC  
Woodhouses CC  
Worsley CC  
Wythenshawe C&SC  
to be confirmed CC*



## The aims for our competition

The primary focus of the Competition Group's work over the next month or so is to ensure that we accurately, fairly and openly place clubs into divisions for 2016 where they can compete week in, week out, with the other clubs of similar standing.

We will be visiting clubs to mark the criteria required for placement but also to discuss development plans and aspirations and find out where the GMCL is placed in those plans and how GMCL can help clubs deliver their own aspirations. We want competitive cricket across the whole season and we want clubs to find the best way for them to be the best they can be within their resources.

Good movement of clubs in the early years through promotion and relegation will of course intensify the competition. The availability of promotion will help clubs retain their best players because players will know they can meet their own aspirations by driving their own team to promotion.

When it is a Premier League the top division will have additional criteria for qualification around the club structure, junior teams and facilities and we will work with our clubs to ensure as many as possible meet the requirements prior to or soon after promotion to the top level.

We want the competition in the highest division to be suitable for our best young players and we will do all we can to ensure that competition is recognised by the county so that we will no longer see the best young players moved to other competitions outside our league.

## Pitch and Ground Inspections

Ian Pickles writes: As you all will be aware, a sub group has been charged by the league with the task of grading all member clubs' grounds and facilities as a part of the process of allocating league starting positions to ensure that we have a good competition for our inaugural season in 2016.

Part of that process requires an inspection of the square and check of facilities and it is hoped to undertake the inspections during August. I think you will appreciate that this is a big task and I am asking if anyone, with any experience of carrying out ground inspections at your club, is prepared to help at some of those inspections. This will be greatly appreciated and not only help speed up the process, it will make the task somewhat easier for those that have so far come forward to assist us.

If anyone wishes to volunteer their services then please contact me by e mail at [PICKLES.IAN@sky.com](mailto:PICKLES.IAN@sky.com)

## Timetable

Dates to be added soon to this timetable

- Steering Group meet to decide who is visiting which clubs
- Clubs informed of Ground Visits
- Ground Visits begin
- Clubs informed of informal chat visit
- Informal Chat visits begin
- Steering group meet to discuss findings of ground and club visits
- Discuss with Clubs individual positions if contentious
- Steering group meet to discuss final positions
- Clubs in contentious positions discussion
- Clubs informed of League allocation

## In the news .....

As you will know we have attracted much publicity along the way.

We will continue our policy of only making formal comments through official press and news releases. Through Social Media and our website we will continue to support all clubs and players in their endeavours in the game, issue news about GMCL and issue clarification of statements made by third parties.

Those seeking official comment should now make their enquiries to the league e-mail address [GtrMcCricket@mail.com](mailto:GtrMcCricket@mail.com) and not to personal mail or Twitter accounts. Questions will be referred to the board, where appropriate, for the league to comment.

## For the record ..... 3rd XI cricket

As already stated we will welcome any club's third eleven to make our own competition stronger. We have board members with many years expertise in arranging fixtures for 3rd XIs and we recognise that there are some clubs that can play Saturdays and some that can only play Sundays. It is our role to accommodate club's wishes and we will make this work for those who wish to take part in the competition on either day or both days.

## For the record (2)..... Umpires

It has been suggested to us that there are statements circulating that there will be a 'clique' of selected umpires that the league will focus its efforts on. We can assure everyone that this is completely the opposite of what we doing.

Alan Naylor writes: Whilst there will of course be certain constraints on who can Umpire at the highest level, as these constraints are laid down by the ECB, I assure you that myself and my fellow Directors are totally committed to developing a pathway for Umpires to train, develop and improve their skills and hence their own performance so they can reach the highest level they can, and I can assure you it will be a level playing field for all Umpires.

Please will you pass on this message to all your colleagues and assure them there is nothing for them to be concerned about. Just for information, I have already met with colleague's from the LCB ACO to arrange training courses for all the GMCL Umpire's for winter 2015 and spring 2016, these will include Level 1 and Level 1A courses. I am yet to speak to the ECB ACO Training Officer for the North West to agree dates for a Level 2 course for GMCL Umpires but I am hopeful this will also take place in the same time frame as the other courses mentioned.

There is a huge commitment from the GMCL to treat all Umpires the same whether they wish to develop or continue as they are; there is a place for them within the new league structure.

## For the record (3)..... Registration after 2016

### **Q: What if clubs want to join after 2016?**

A: We have stated all along that we want similar standard clubs playing each other week in week out and that we want as many teams as possible playing in the league. This will be no different for clubs joining after our inaugural year, so we will continue to accept applications where clubs choose to move, find themselves without a competition or where a group of teams, divisions or a whole league decide that they want to join the GMCL structure.

For an individual team we will place them in the structure where we believe they will provide appropriate competition for our founder members and we will do this by adjusting promotion numbers from leagues below with notice given early in the season for the following season.

Where there are a number of teams applying together we will place them as a group at the appropriate level. This is where the expansion line on the prospectus structure comes in to play. We will work on the basis that we will endeavor to place teams appropriately with as little disturbance as possible to our founder members. Of course, It is not possible to give a detailed solution on a hypothetical situation relating to an unknown number of clubs of unknown standard at this time.

## Hot Topic

Junior cricket will be regionalised, local clusters using local structures where possible. Local league & cup competitions will lead to elite cross-county club, intra-league and inter-league competition with Talent ID routes.

The structure allows for multiple age group teams from each club at a range of standards to provide maximum participation, competition and elite level cricket.

This will be supported by full online fixture, result and league table displays.