



GREATER MANCHESTER CRICKET LEAGUE

WELCOME

EMIRATES OLD TRAFFORD

3rd October 2015

**GREATER MANCHESTER
CRICKET LEAGUE**



AGENDA

 INTRODUCTION

 BOARD OF DIRECTORS

 WHAT HAVE WE DONE?

 WHAT ARE THE OUTCOMES?

 NEXT STEPS

 QUESTIONS



INTRODUCTION

- **Welcome by Chair of Board of GMCL**
- **What has happened since April...**
- **New partnerships, new friends.**
- **Commitment to improving standards remains priority.**

3rd October 2015

GMCL Interim Chair:

"We are striving to support club improvement in everything we do, on and off the field"

INTRODUCTION

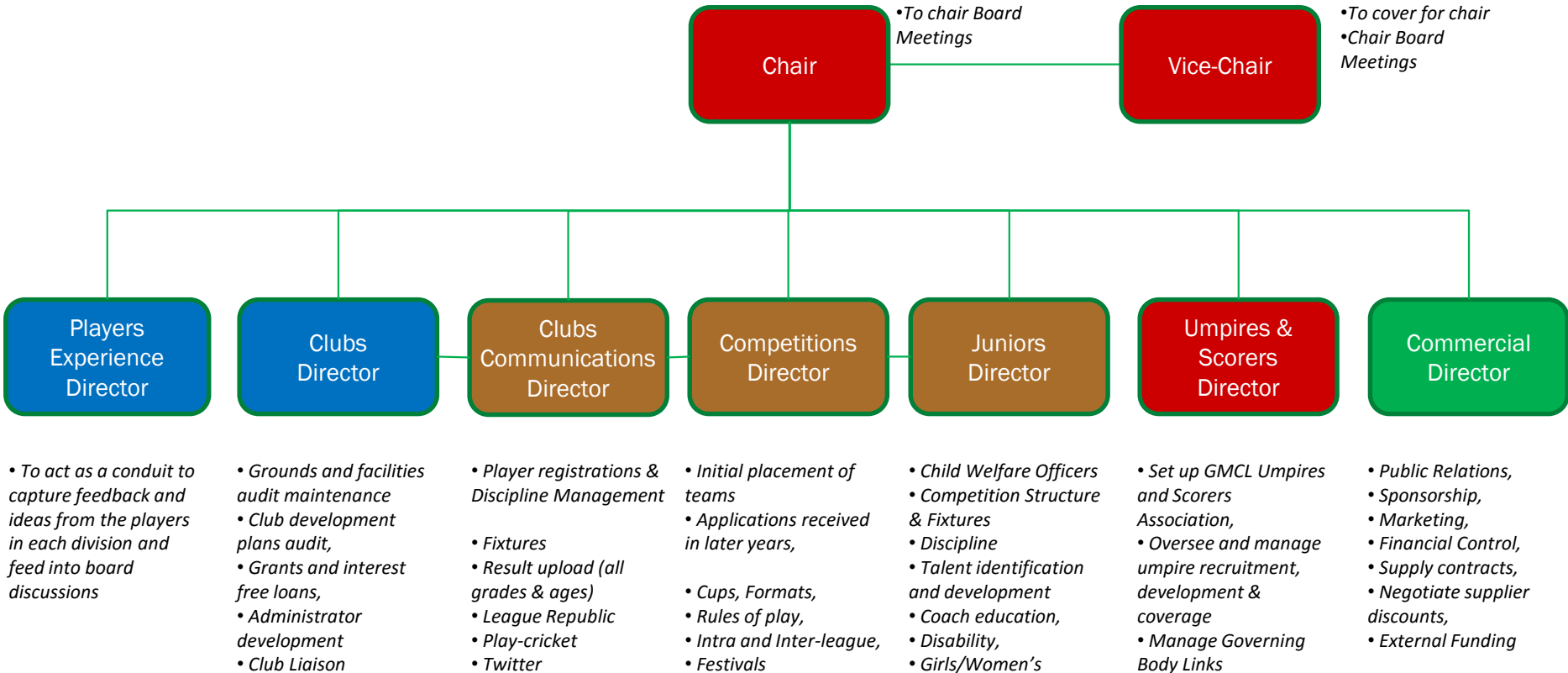
- **Positive change -**
- 52 Clubs (full members) have committed - remember the business plan
- **135 senior teams, 171 junior teams**
- Over 100 people been involved
- Huge undertaking - sorting out the spaghetti

3rd October 2015

GMCL Interim Chair:

"We have the number of clubs we hoped for in year 1, the number of teams makes this huge."

BOARD OF DIRECTORS



CLUBS DIRECTOR

- Working with clubs and their development plans
- Clubs driving the improvement in standards
- Grants - internal & external
- National Governing Body Liaison



IT & COMMUNICATIONS DIRECTOR

- Supporting club maintenance of player registrations, transfers & availability
 - **Managing live score feeds for press and post match results & updated tables**
 - Supporting Umpires with Umpire Appointment Lists
 - **Mobile & tablet friendly, live feed web pages**
 - Option for scorers to maintain own club stats
 - **Supporting club and league sponsors through web links**
- IT SUPPORT TEAM
 - **Play-cricket only mandatory for Premier League; in-league support available & Total Cricket Scorer to be used for top division**
 - Providing solutions not additional paperwork
 - **Tech support & help by e-mail – direct e-mail to League IT Administrators**
 - News feeds to league, division and team pages on web sites
 - **Supporting club's own IT platforms**
 - Providing a free web site for clubs without a web presence

UMPIRES & SCORERS DIRECTOR

- **GMCLUSA – What is this and how will it work?**
- **OBJECTIVE** – To provide Umpires to GMCL, to recruit, appoint, develop, retain and manage Umpires on behalf of GMCL
- **WHO?** – Chairman, 3 x Appointments Secretary's, Treasurer, Discipline Secretary, Assessment Secretary, Scorers Secretary
- **APPOINTMENTS** – Six weeks in advance published on the GMCL website
- **OBSERVERS** – To help Umpires
- **UMPIRES** -
 - Fees = Premier League likely to be £43.00
 - other 1st XI matches = £40.00,
 - 2nd XI & 3rd XI = £35.00
- **How many do we need?**
- **Applicants so far**
- **Club Umpires?**
- **Training**

3rd October 2015

Alan Naylor, Umpires & Scorers Director:

“By the end of next week GMCLUSA will already have 75% of the umpires we need. We are training more to improve the level of qualifications in our group; improvement in standards is my driver.”

COMPETITIONS' DIRECTOR

League rule/byelaws

-  New league rules and byelaws have been drafted, they follow what was set out in prospectus
-  Focus group to be set up with players from 1st, 2nd and 3rd elevens to discuss the detail before publication.

Cup competitions

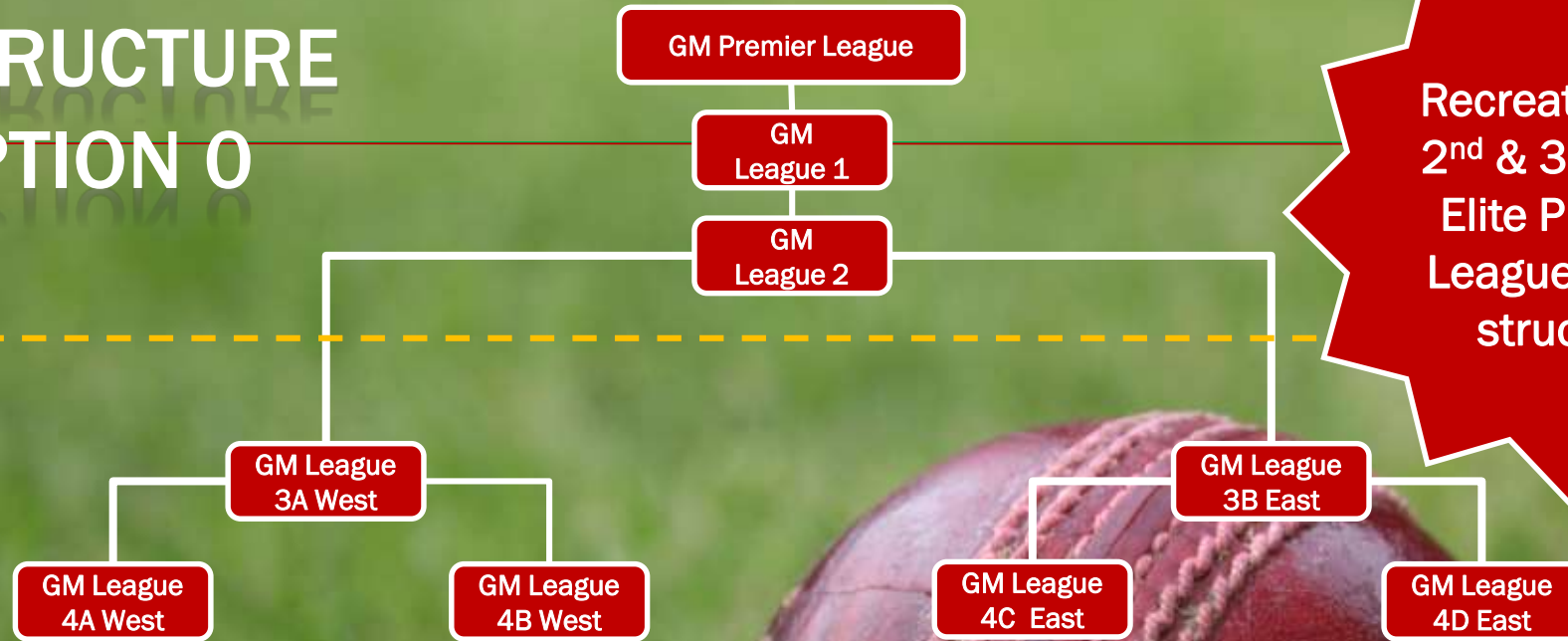
-  FA cup style cup competitions for 1st 2nd and 3rd teams
-  Twenty/20 competition will be organised for May/June /July with a finals day, format to be discussed by focus group.

3rd October 2015

GMCL Competitions Director:

"Focus group of leading players at 1st, 2nd & 3rd XI will consider, amend and ratify the rules and byelaws proposed in the prospectus".

STRUCTURE OPTION 0



Recreational & 2nd & 3rd XIs to Elite Premier League in one structure

As originally proposed, matching the prospectus estimate of 6 divisions below the linear structure, and based on current numbers wishing to play on Saturdays

We would have had more than 6 divisions in this regionalised structure but we have listened to club wishes and we now have 36 teams registered for Sunday only competition and this may well rise to 40 in the next week. This will therefore be 5 separate leagues of 8 which will be as regionalised as possible

3rd October 2015

From the floor:

"The geography must not lead the process, quality of competition must come first"



STRUCTURE OPTION 1



Prospectus states we would be completely regionalised below the linear leagues. This will be difficult to manage with 6 feeding in to one.

3rd October 2015

From the floor:

Little support for this proposal

STRUCTURE OPTION 2



Recreational & 2nd & 3rd XIs to Elite Premier League in one structure

Second alternative structure now offered -
For West & East you could also read North and South

With the numbers we have, with the third XIs taken out this may not give sufficient regionalisation

3rd October 2015

From the floor:

Support and good discussion generated on this option

COMMERCIAL DIRECTOR

 Main & Subsidiary sponsors

 Balls

60 CLUBS

135 SENIOR TEAMS

170 JUNIOR TEAMS

OVER 1000 SENIOR PLAYERS

1500 JUNIOR PLAYERS

10,000 STRONG CRICKET FAMILY

3rd October 2015

Commercial Director:

*“Announcement on match balls by end of October,
announcement on Main & Subsidiary Sponsors will be
made in January”*



sponsored by

**MAIN LEAGUE
SPONSOR**

GREATER MANCHESTER CRICKET LEAGUE

JUNIORS' DIRECTOR

- Based on Club Returns to date (still a few outstanding)
- **171 Junior Teams**
- 5 Clusters, North, East, South, West & Central
- **Working in links with existing junior competitions**
 - Bury Merit League, BCL, Pennine League, Salford Youth Cricket, South Manchester Junior Cricket League & Oldham and Tameside District League
- = a puzzle as 171 Junior Teams of differing geography and ability
- So expect:-
 - Under 9 very local geography
 - Under 11 local possibly divisional in places
 - Under 12 and 13s to play in an Under 13 league some local some divisional
 - Under 14 and 15 to play under 15s in joint clusters
 - Under 16-18 to play under under 18s in joint clusters

Cluster North

Egerton
Edgworth
Edenfield
Greenmount
Totty St John
Brooksbottom
Woodbank
Walshaw
Elton
Bolton Indians
Deane and Derby
A N Other

Cluster West

Clifton
Astley and Tyldesley
Winton
Roe Green
Swinton Moorside
Worsley
Flixton
Irlam
Westleigh

Cluster Central

Bamford Fieldhouse
Heywood
Bury
Thornham
Radcliffe
Unsworth
Stand
Prestwich

juniors@gtrmcrcricket.co.uk

Cluster East

Woodhouses
Droylsden
Dukinfield
Denton
Denton West
Denton St Lawrence
Flowery Field
Hyde
Glossop

Cluster South

Stretford
Whalley Range
South Manchester
Wythenshawe
Friends Sporting Club

3rd October 2015

From the Juniors Director:

“The GMCL Junior competition will work with existing junior competitions and will be flexible and regional but highly competitive. We are attracting outside clubs and we are open for business”

JUNIORS' DIRECTOR

- The ethos of the Junior part of GMCL is to enable children to play cricket in line with some of other existing arrangements. This means we will accept Junior teams to enter the league if their Seniors play in other Leagues if their Seniors host League permit this. It also means that the GMCL will allow Clubs to enter Juniors in other Leagues however any club Player may only trial for one Interleague team.
- The plan is to play all League and cup fixtures during the school year for 2016 from April 25 to 17 July in essence to honour the sanctity of the competition being entered be it cup or league. This provides ample time to fit the cricket in. This avails:-
 - 10 Mondays disregarding the two May Bank Holidays.
 - 12 Tuesdays, Wednesdays, Thursdays, Fridays and Sunday
- Expect Cluster or joint Cluster league winners at under 9 to 18.
- Cup - expect GM wide knockout at under 11, 13, 15 and 18
- Expect two Lancs KO places to be provided by LCB given our size at under 11, 13 and 15
- Expect under 12, 14 and 18 interleague.

JUNIORS' DIRECTOR

- Work from here
- 1. Clubs to confirm a final and binding decision on their entries at each age group by 31 January 2016 .
- 2. Design of the admin structure to operate the multi-faceted League. Am expecting Senior Clubs to act as area leaders locally in this, given they have the capacity to do so.
- 3. Recruit Admin & interleague managers for the under 12,14 and age group and Senior teams.

NEXT STEPS

The work
does not
stop here

- Coming to the boil
- **Player involvement - review of Rules & Bye-Laws.**
- Player involvement - input on Competitions
- **Taking feedback from today on Divisions**
- Delivery of winter courses & Talent ID
- **Preparations for League AGM & Meeting structure.**

COACHING PROGRAMME

- Winter Coaches nights arranged at
- And events supported by
- www.totalcricketcentre.co.uk

TotalCricket
in a league of our own

- Six Thursday Nights running from
- Oct 20th to November 24th
- Six separate events for GMCL clubs' Junior Coaches

3rd October 2015

GMCL Interim Chair:

"High quality professional sportsmen and coaches from outside GMCL will lead on these events, designed to bring the GMCL Coaching community together"

GMCL
GREATER MANCHESTER CRICKET LEAGUE

OTHER COURSES & LIAISON ACTIVITY

- **Umpires Courses**
- **Scorer's Courses on How to Score and how to use Play-cricket & Total Cricket Scorer for Top Division**
- **Under 13 Winter Competition Plans**
- **Media Events with Partners**

3rd October 2015

From Interim Chair:

"Working with Media Partners will drive up interest in our competition and continue to heighten our profile.

All parties looking for regular and quality updates"



GREATER MANCHESTER CRICKET LEAGUE

QUESTIONS

GREATER MANCHESTER
CRICKET LEAGUE
FOR 2016

THEY SAID THIS

“It will be interesting for sure but nevertheless, clubs have to deal with it and get to the level they feel they should be at. It's why we are here!!”

“we do not want meetings to be talking shops or diktats from a committee. We would like clubs to be able to make genuine contributions to meetings”

“Our experience of LCB KO games has given us a desire to stretch ourselves against clubs of a slightly higher standing”.

“local cricket needed a lift it has become stale “

“Cricket in the NW needs a fresh structured start”

“like the idea of promotion and relegation and being in with a chance of winning something at our level”

“main reason that we decided to join is to continue to progress and offer the highest / best level of cricket for our senior / junior players. The opportunity was too good to miss”

**LEADING
THE
CHANGE**



**THANKS FOR YOUR WORK
SUPPORTING THIS PROCESS**

**GREATER MANCHESTER
CRICKET LEAGUE**

